

## Wheeler Peak Summit Trail #67

*Type: Out & Back*

*Length: 2.2 miles (4.1 miles from Williams Lake Trailhead)*

*Difficulty: Intermediate to Expert*

*Elevation Gain: 1,910 ft. (2,961 feet from Williams Lake Trailhead)*

*Trail Beginning: 11,140 ft.*

*Trail Ending: 13,161 ft.*

### **Access:**

The Williams Lake trailhead parking is located 2 miles up the valley from the ski resort base area. From the upper level parking lot (Coyote), take Twining Road approx. 2 miles and follow the signs to the trailhead. This is a good dirt road, but winter access requires an all wheel drive or 4-wheel drive vehicle.

### **Trail Description:**

The trail follows the Williams Lake Trail (#62) almost to the lake before heading to the summit for an additional 2 miles. Start by hiking south on the broad trail from the parking lot and kiosk. Walk past a small pond on the left then continue past The Bavarian and ski area facilities. Walk up and under the chairlift following the signs for Williams Lake. This area is very well marked. The trail will follow the west side of Lake Fork Creek for a bit. A sign marks the trail entering the Wheeler Peak Wilderness. The trail is now located in Engelmann spruce stand and near the upper end opens up into meadowland and scattered rock fields. Take time to view the avalanche paths and their impact on the surrounding forest. At the high point of the Williams Lake trail before it descends to the lake, you will see a post marking the Wheeler Peak Summit Trail junction on your left. This area offers opportunities to view the scenic Williams Lake a short walk further on trail #62. Take time to appreciate the striking features left behind from the last of the glaciers receding over 10,000 years ago. After the junction of the Wheeler Summit Trail #67 the grade gets a bit steeper. It maintains a fairly consistent pitch however; technical climbing gear is not needed. Because the tread is narrow and uneven, built through several scree fields, no equestrian travel is permitted on trail #67. The trail traverses several switchbacks, stay on the trail to prevent falling rock and trail degradation. Please stay off the steep "old route"; it is undergoing rehabilitation efforts by the Carson National Forest. Above tree line enjoy the stunning views throughout the rest of the trail. In approximately 2 miles from the Williams Lake Trail junction, trail #90 is reached. Hike to the right continuing south a short distance to the Wheeler Peak summit at 13,161 feet.

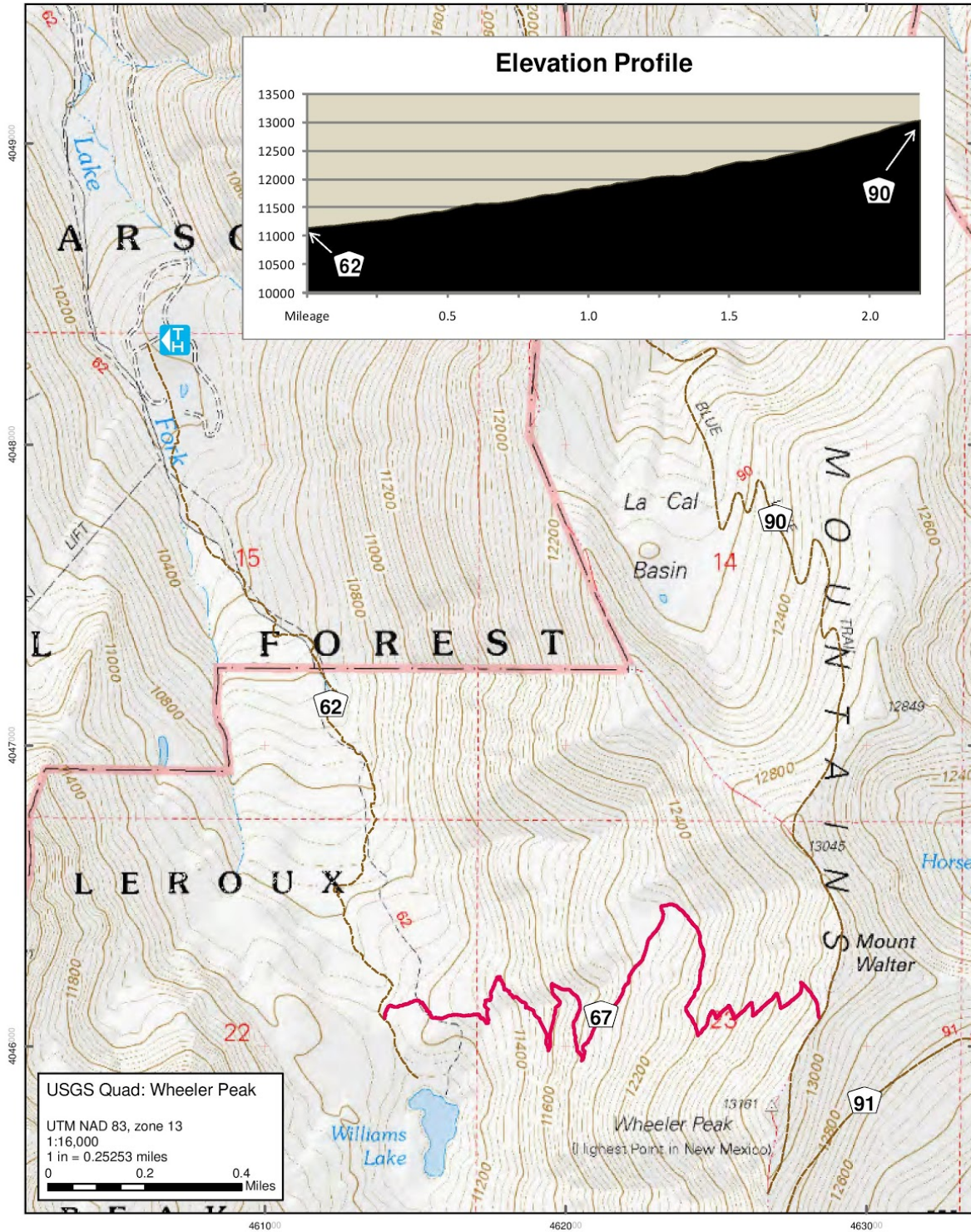
**Visit**

Taos Ski Valley

[www.taoskivalley.com](http://www.taoskivalley.com)

— Roads  
- - - Other Trails

### Wheeler Summit Trail #67



# Visit

Taos Ski Valley

[www.taosskivalley.com](http://www.taosskivalley.com)